



# Challenges & Opportunities

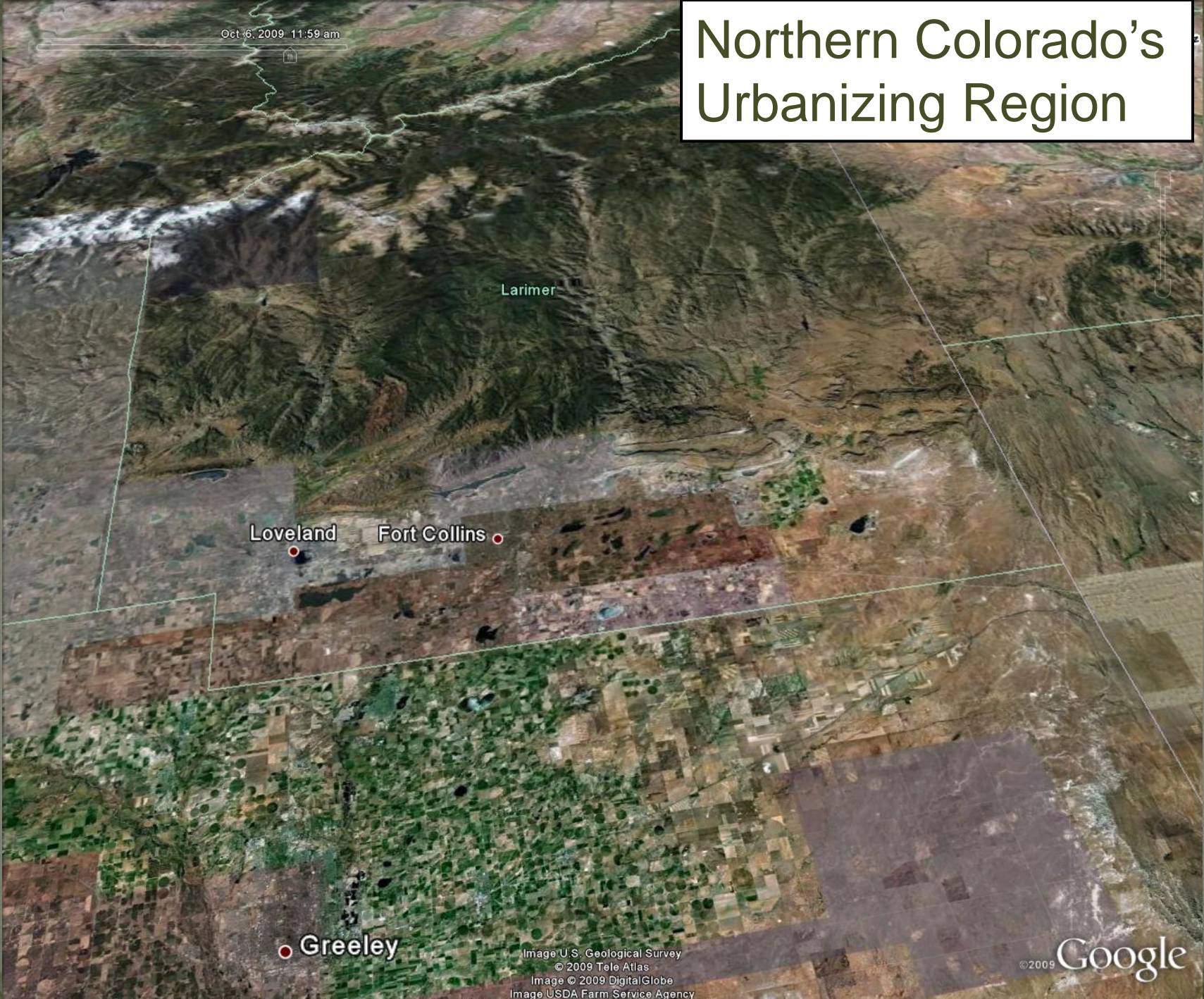
for Northern Colorado

Part I



Oct 6, 2009 11:59 am

# Northern Colorado's Urbanizing Region



Larimer

Loveland

Fort Collins

Greeley

Image U.S. Geological Survey  
© 2009 Tele Atlas  
Image © 2009 DigitalGlobe  
Image USDA Farm Service Agency

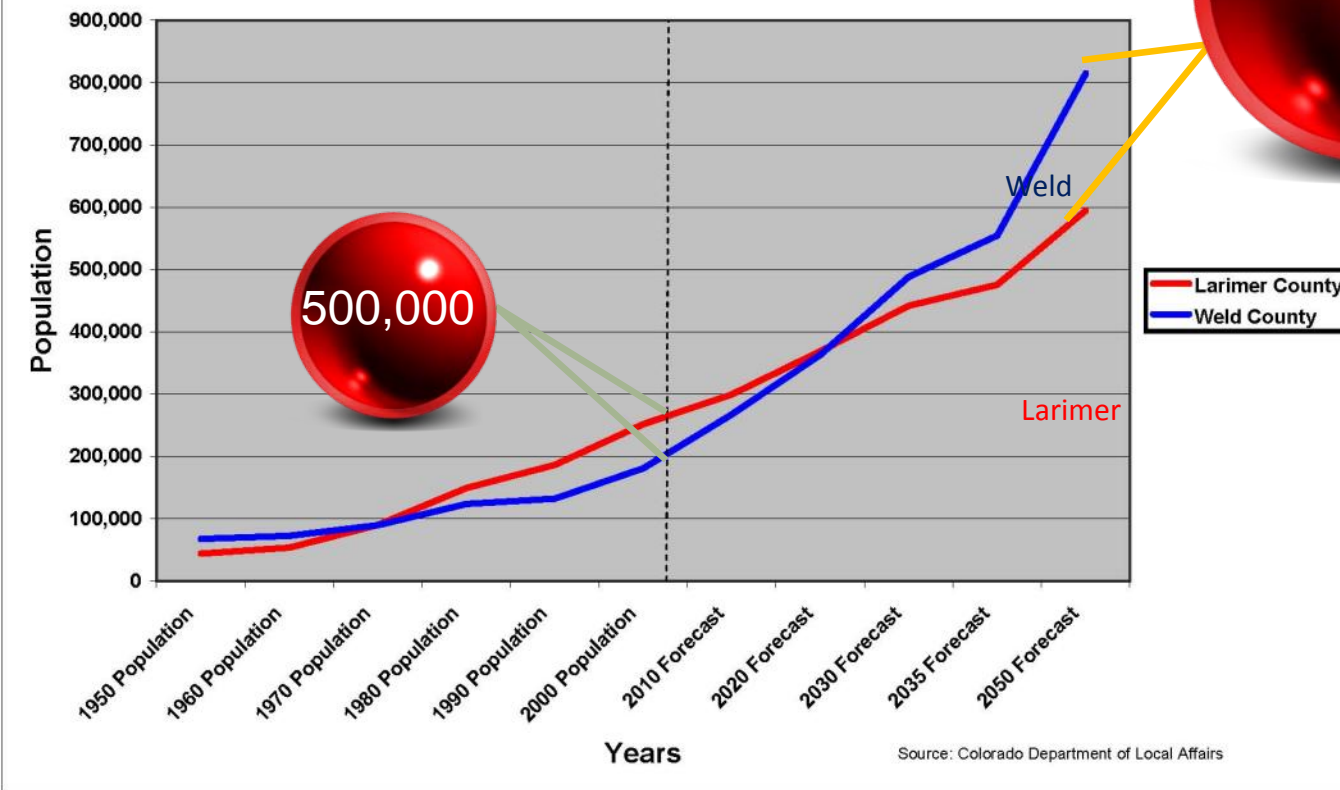
©2009 Google

Imagery Dates: Jun 17, 2005 - Oct 23, 2006

40°39'16.37" N 105°06'01.71" W elev 5117 ft

Eye alt 46.33 mi

# Northern Colorado Growth



500,000

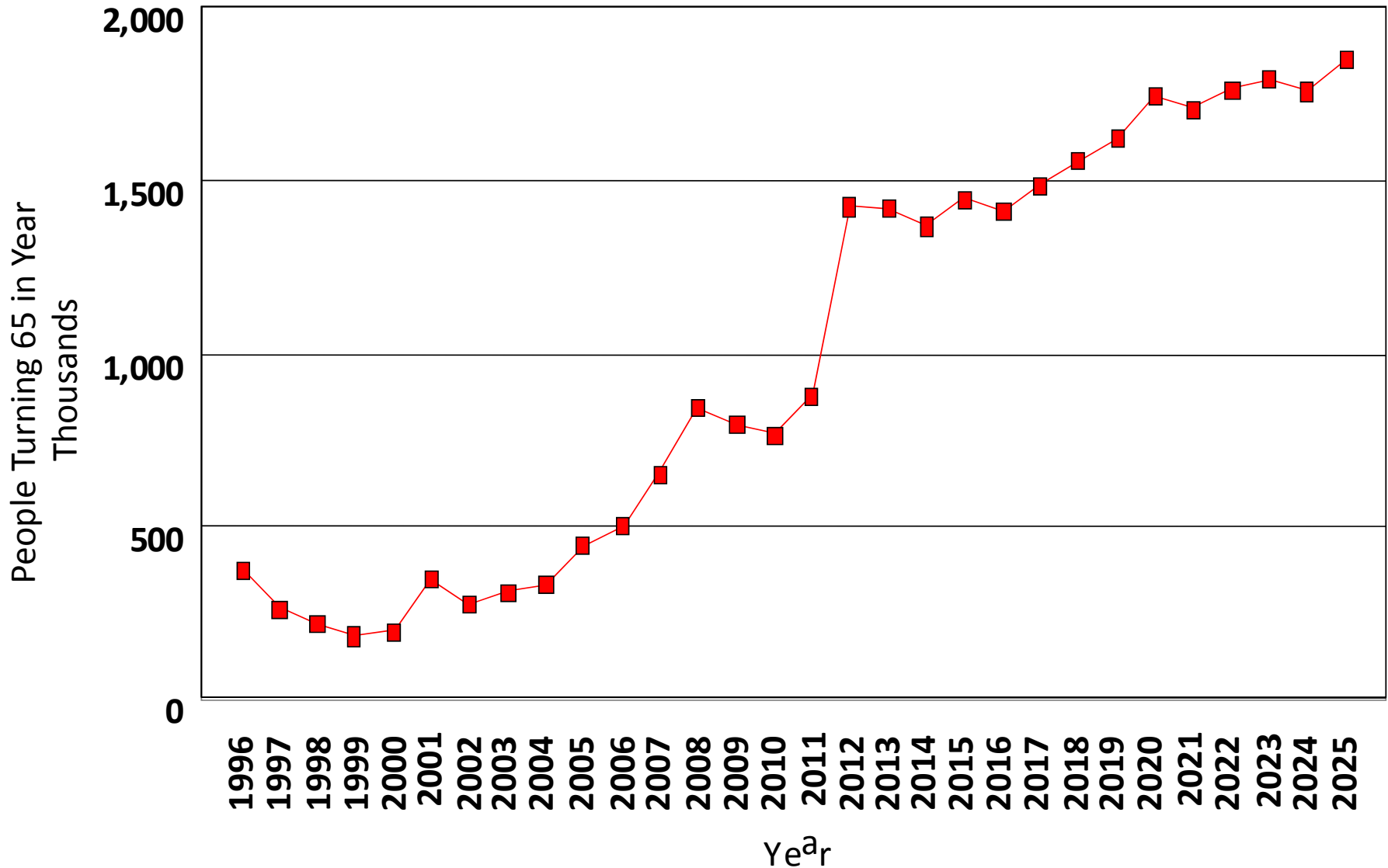
1.4 Million

Weld

Larimer

Larimer County  
Weld County

# People Turning 65 Annually 1996-2025



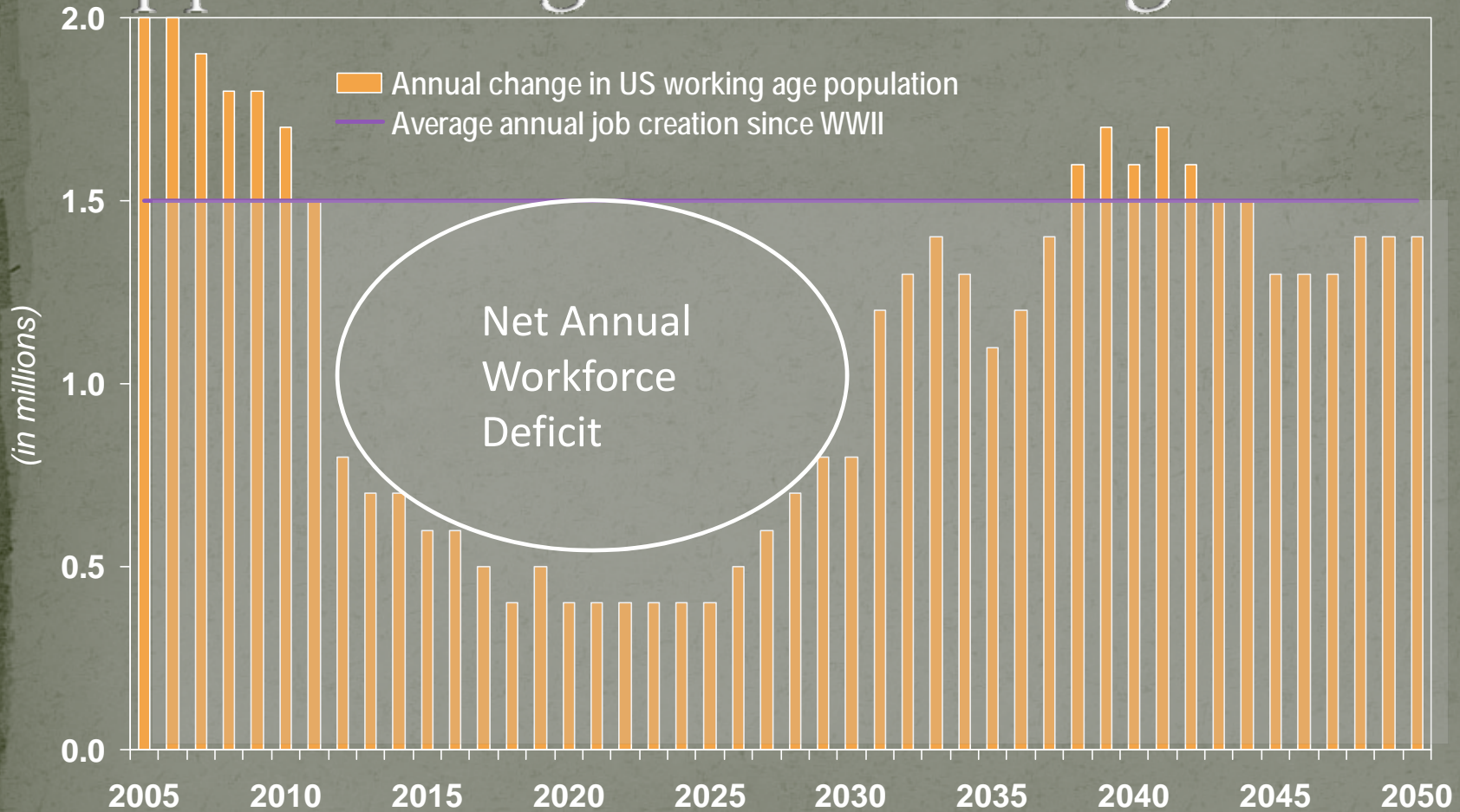


# Baby Boomer State

- In 2000
  - Nearly half (45%) of Colorado's workforce are Baby Boomers (1946 -1964)
- In 2015
  - Every 15 minutes a child will be born and
  - Every 15 minutes 2 Coloradoans will turn 65
- In 2030
  - Colorado's population 65+ will be 3x that in 2000
  - Projected to be 1.2 million people



# Approaching Labor Shortages



Source: TIP Strategies; US Bureau Labor Statistics; U

# Economy

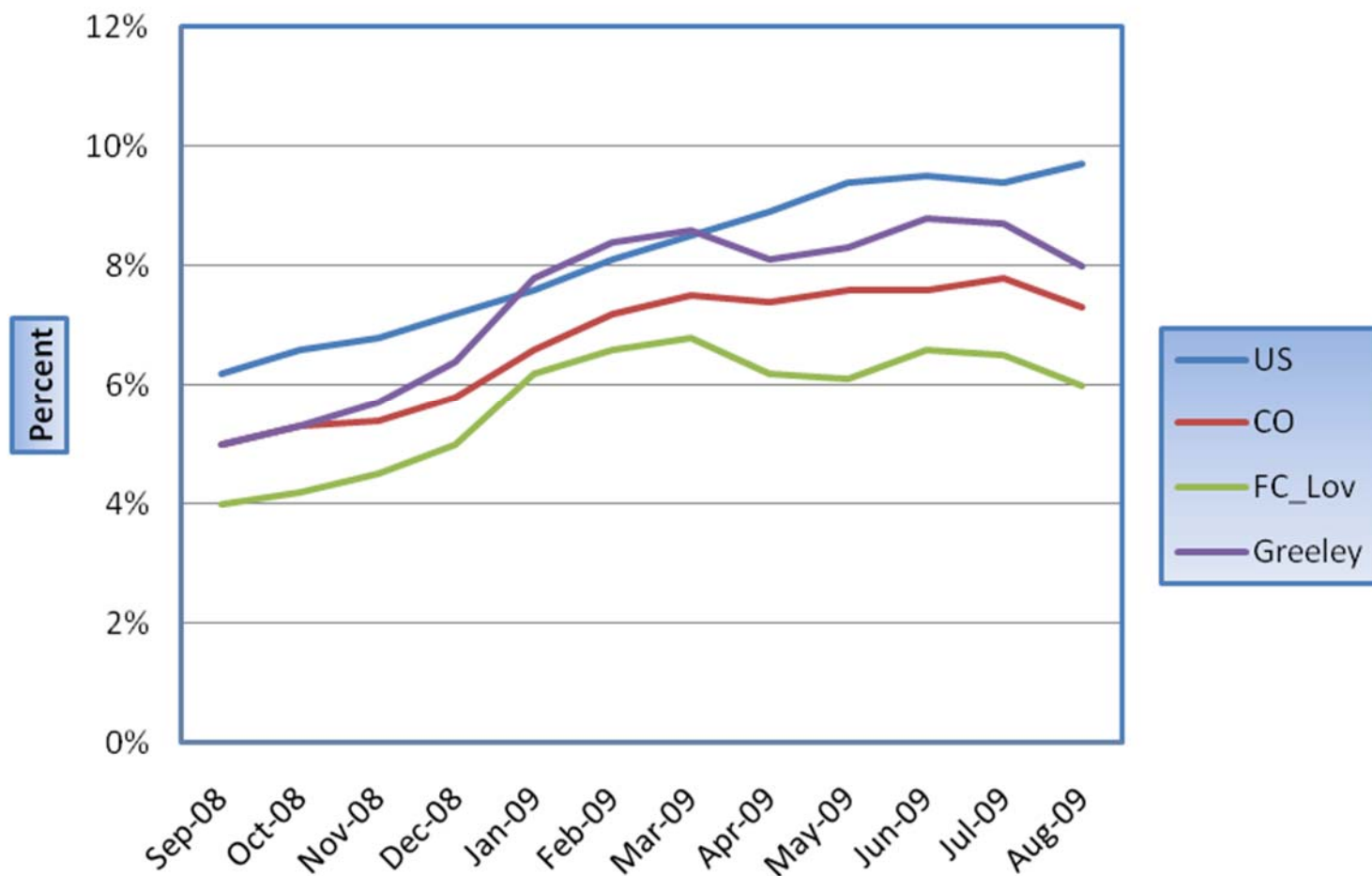
- Northern Colorado is competing in the global economy
- In 2007, Weld county accounted for \$1.54 billion in value of agricultural products sold – 25% of gross receipts in Colorado - 8<sup>th</sup> in the US
- Colorado State University, technology and manufacturing are the dominant economic sectors in Larimer county
- There are nearly 12,000 oil and gas wells in Weld county



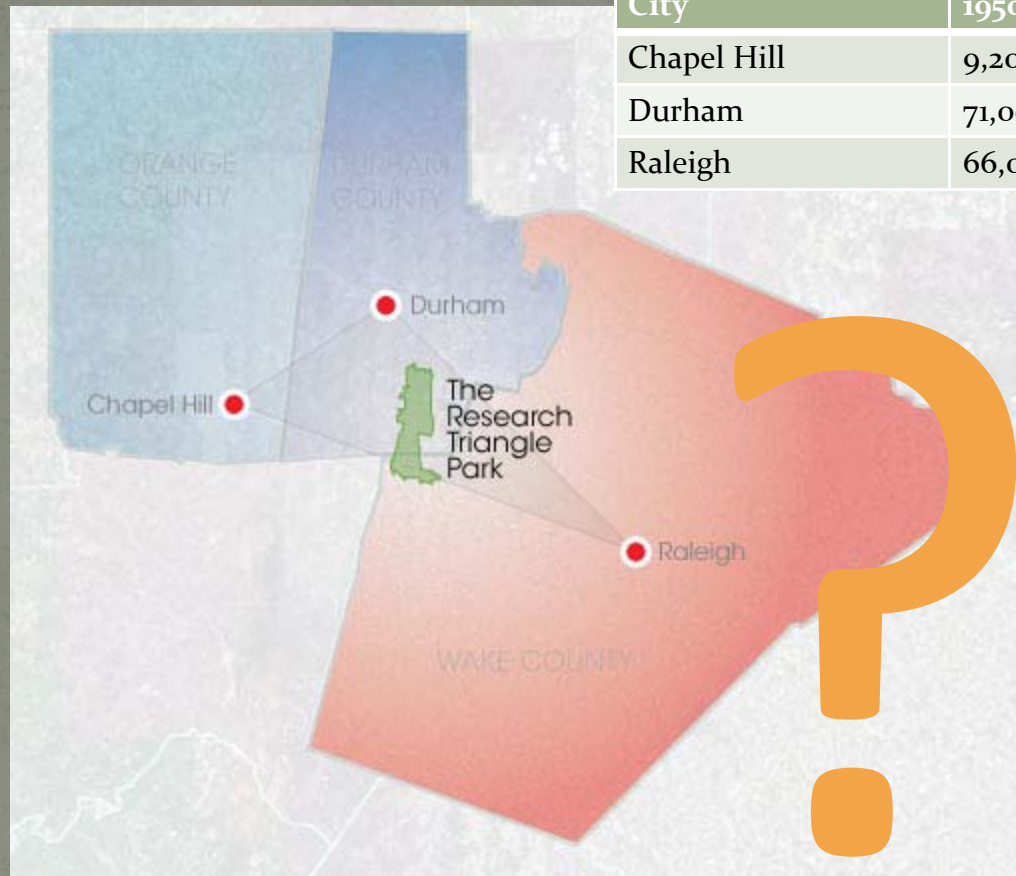
# Economy



## Northern Colorado Unemployment



# An Economic Vision



City	1950 Census	2000 Census
Chapel Hill	9,200	54,000
Durham	71,000	208,000
Raleigh	66,000	342,000

50 Years Old This Year!